

A CHECKLIST FOR Local Community Events

SOMERSET COUNTY HEALTH DEPARTMENT

- ☐ COVID-19 Vaccinations
Wednesdays, Fridays
443-523-1920
Somerset County Health Department

- ☐ S-Ray Summer Program
Ages 13-17
Tuesdays, 3pm - 4pm, Crisfield Library
Wednesdays, 3pm - 4pm, Princess Anne Library

- ☐ Tobacco Cessation Classes
Tuesdays, 11am - 12pm, Princess Anne Library
Tuesdays, 3pm - 4pm, Crisfield Library

- ☐ Reproductive Health Clinics
Thursdays, 8:30am - 4:30pm
Appointment only

FOR MORE INFORMATION VISIT
SOMERSETHEALTH.ORG
OR CALL 443-523-1700.



SOMERSET COUNTY PUBLIC SCHOOLS



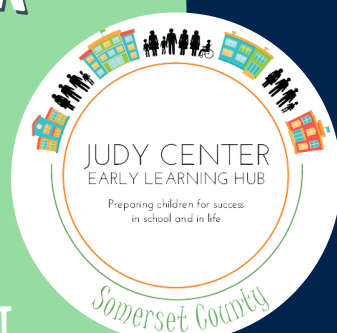
FOR MORE INFORMATION VISIT
SOMERSET.K12.MD.US OR CALL 410-651-1616



JUDY CENTER

- ☐ Play Pals
Tuesdays, 10:00am - 11:00am
(Play Group Birth - Age 5)
Crisfield Library
- ☐ Storytime
Wednesdays, 10:00am - 11:00am
Crisfield Library
- ☐ Play Pals
Thursdays, 10:00am - 11:00am
(Play Group Birth - Age 5)
Princess Anne Library
- ☐ Storytime
Fridays, 10:00am - 11:00am
Princess Anne Library

FOR MORE INFORMATION VISIT
SOMERSETEARLYLEARNING.ORG OR
CALL 410-651-1275



TIDALHEALTH

- ☐ Gentle Yoga
Every Wednesday, 1:30pm - 2:30pm
Avery W. Hall Educational Center Aerobics Room

- ☐ Free Vascular Screening
July 14, 8:00am - 3:00pm
TidalHealth Peninsula Regional

- ☐ Blood Drive
July 15, 8:30am - 1:30pm
Avery W. Hall Educational Center Auditorium

FOR MORE INFORMATION VISIT TIDALHEALTH.ORG
OR CALL 410-546-6400



MARYLAND DEPARTMENT OF NATURAL RESOURCES



FOR MORE INFORMATION VISIT
DNR.MARYLAND.GOV OR CALL 1-877-620-8367

SOMERSET COUNTY RECREATION, PARKS, & TOURISM



FOR MORE INFORMATION VISIT
PLAYSOMERSETMD.COM/#/ OR CALL 410-651-4980

SALISBURY ZOO



☐ Story Time - Crickets
June 26, 10:00am - 11:00am

FOR MORE INFORMATION VISIT SALISBURYZOO.ORG OR
CALL 410-548-3188

SOMERSET COUNTY LIBRARY



☐ Amazing Josini
July 12 - Crisfield Library, 11am
July 12 - Princess Anne Library, 2pm

☐ Chincoteague Bay Field Station
July 19 - Crisfield Library, 11am
July 19 - Princess Anne Library, 2pm

☐ Reptile Wonders
July 26 - Crisfield Library, 11am
July 26 - Princess Anne Library, 2pm

FOR MORE INFORMATION VISIT
SOMELIBRARY.ORG OR CALL 410-651-0852